



Ashgrove House

Pimlico, SW1V

A charming one bedroom flat located in the exclusive Bessborough Gardens gated development benefiting from its own entrance, secure underground parking and a 24 hour porter.



Ashgrove House

Pimlico, SW1V

- One Double Bedroom
- Direct Garden Access
- Own Entrance
- Secure Underground Parking
- 24 Hour Porter



This super one bedroom flat is accessed via its own entrance from the landscaped communal gardens and offers over 700sqft of living space including a fabulous reception room with good ceiling height and a floor to ceiling window allowing a good amount of natural light, a separate galley kitchen, double bedroom with built in storage and bathroom. There are also two separate storage/utility rooms.

Additional benefits include an allocated underground parking space, and a 24 hour porter.

Located within close proximity to Pimlico Station this is the ultimate London base, home or letting investment. The flat also comes with a

Tenure: Share of Freehold

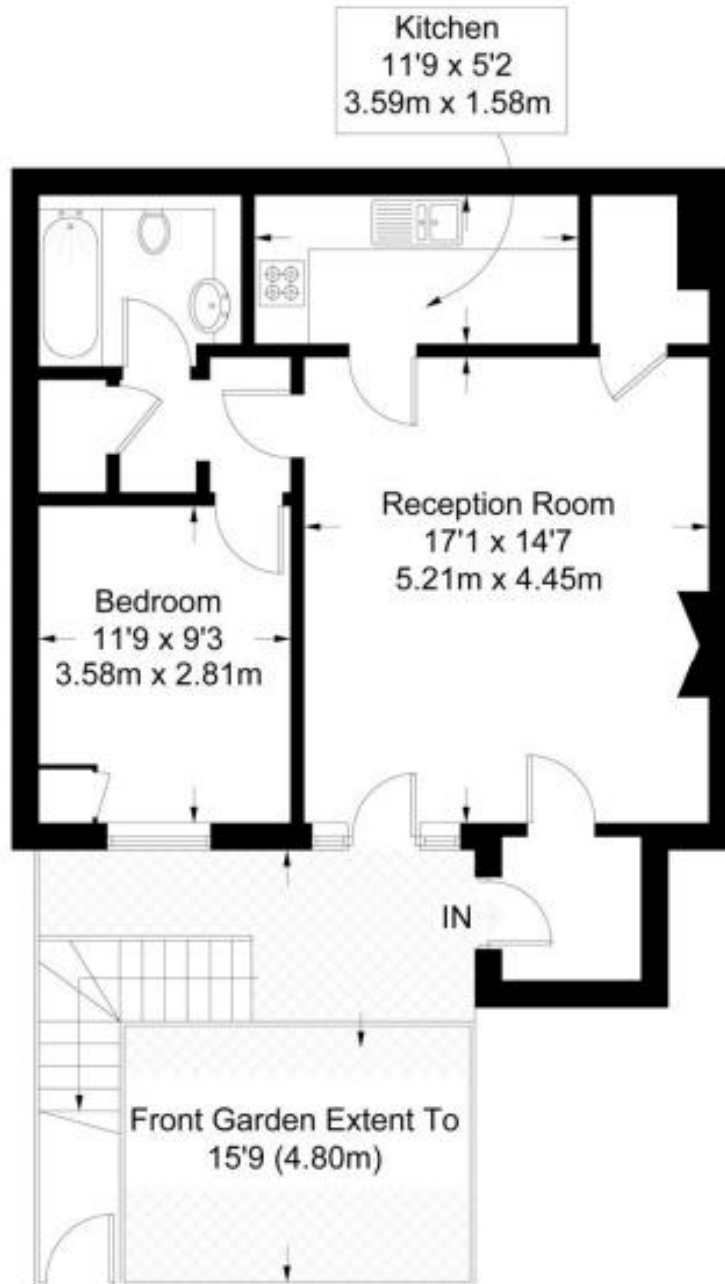
Service Charge: Please contact the office for details

Ground Rent: Please contact the office for details



Ashgrove House

Approximate Gross Internal Area = 593 sq ft / 55.1 sq m



Lower Ground Floor

Not to scale, for guidance only and must not be relied upon as a statement of fact.
All measurements and areas are approximate only and have been prepared in accordance with the current edition of the RICS Code of Measuring Practice.